

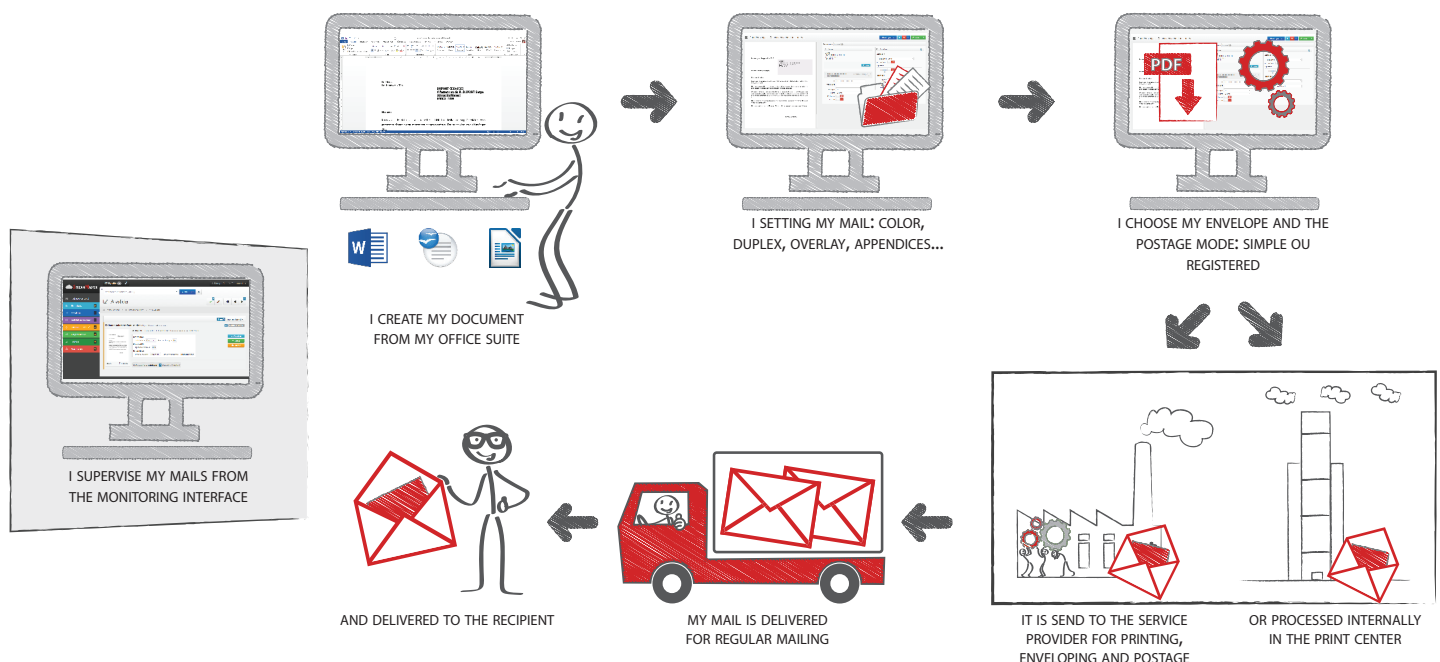
# HYBRID

your mails in one click

## Perform and optimize your mailing operation directly from your desktop

Hybrid is a solution that allows an organisation to achieve all posting and mailing operations automatically using a standardised desktop solution. Once the mail has been created by the user, Hybrid takes care of all other aspects of the mailing process including presentation, printing and final output choice.

Hybrid has been optimised for the ultimate user experience with a GUI based upon extensive research and ergonomic design. Allowing complex actions to be completed in a simple manner. The user can further enhance the GUI depending on person and organisational needs.



### BENEFITS

#### REDUCE COSTS

Reduce your printing costs and office supplies with Hybrid. Mails can be customised and sent for print from the desktop environment

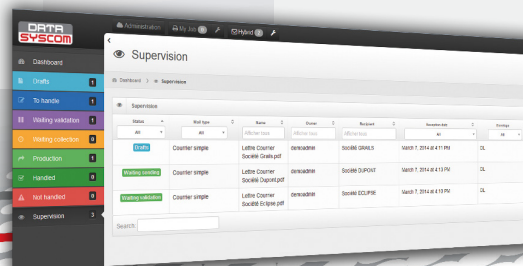
#### REDUCE PRINTING

With Hybrid mails can be routed to a local print centre or service provider enabling cost to be reduced through economies of scale.

### DASHBOARD

#### CREATE YOUR WORKSPACE

To be efficient a user needs to feel comfortable with the application they use. Hybrid enables the user to configure Hybrid to exacting requirement without effecting any of the backend capabilities. Menus can be customised, colours changes to corporate image etc. The configuration is automatically saved.



# DATA SYSCOM

## FUNCTIONS

### PORTABLE DEVICES COMPATIBILITY

Hybrid is accessible and compatible on a multitude of today's devices including all PCs, laptops, tablets and phones. The Hybrid adapt to suit the device it is required to run choosing the best interface for that environment

### MAILS SORTING BY STATUS

For a solution to be efficient the user needs to be clearly able to define what actions need to be taken. Hybrid uses primary colours to enable this so users can clear see what needs to be actioned.

### SEARCH AND FILTERINGS

Hybrid enables the user to search and filter based on a number of criteria.

### USER'S RIGHTS MANAGEMENT

Administrators have the ability to tailor the user's rights restricting or enabling functionalities.

## ONLINE HELP

There is a comprehensive online help library available to the user at all times giving. Should further assistance be required then DATA SYSCOM are available to assist.

## FORM OVERLAYS AND PRE PRINTED

Hybrid can add forms and overlays to the mail enabling the user to view a true likeness of the final rendering before sending the job for printing. All of this is carried out quickly, on the fly.

## LOCAL SETTINGS

Hybrid has multi language support. The product will pick up local device setting and tailor the experience to that language. English and French are default settings.

## APPENDICES

Additional appendices may be added to the main document. Located in a repository, they are inserted on top of the main mail, in the same envelope. The user then may choose between a simplex or duplex printing of those documents. Thus having you saving paper and minimize mail postage cost.

Users can define the address zone and make on the fly corrections if necessary.

The hybrid mail handling shows that it is essential to be able to propose a mail validation system by a third part.

The screenshot displays the Hybrid mail handling interface. On the left, a mail preview is shown with the subject 'Courrier simple - Relance paiement facture.doc'. The preview includes a date stamp 'Le Mans, le 17 septembre 2013' and a recipient address 'MAIRIE COMPTABILITE FOURNISSEURS, 5 avenue des Acacias, 14000 CAEN'. The body of the mail contains a message from 'Service Comptable' dated 'Le Mans, le 17 septembre 2013'. On the right, a configuration panel is visible with tabs for 'Configuration' and 'Paramétrage'. The 'Configuration' tab is active, showing fields for 'Nom', 'Courantaire', 'Enveloppe', 'Priorité', 'Recto-verso', and 'Validation'. The 'Paramétrage' tab is also visible, showing settings for 'Distribution', 'Avec attribut', 'Impression', 'Impression couleur', 'Type de courrier', and 'Date de soumission'.

The solution is able, on the fly, to select the correct envelope depending predefined rules. Hybrid allows the user to select the correct settings in terms of printing media, duplex, simplex, paper type etc. to achieve optimal costings and substantial savings for the organisation.

## SEND MAILS EASILY

### FILES SUBMISSION

There are a number of ways mail can be submitted to Hybrid using a virtual print on Windows, from a browser, using the interface or via command line.

### COMPATIBLE FILE FORMATS

Hybrid accepts several file formats, Postscript, Word and PDF.

### MAILING

Hybrid enables the user to send the same mail to any number of recipient's while keeping the address customizable.

## TECHNICAL SPECIFICATIONS

### TECHNICAL PRE-REQUISITES

Server hardware requirements: RAM: 4 GB minimum ; Hard disk space: 500 Mo for installation + data storage regarding volume ; CPU: multicores advised.

Supported operating systems: Any system with JDK 1.6.

Supported database: Oracle from 10g version, free version XE) ; ft SQL Server (> 2003).

Software requirements: Tomcat 7.

### DESKTOP MINIMUM CONFIGURATION

Desktop hardware: All systems.

Software minimum configuration: All recent browsers.

Resolution: A terminal (PC/ Tablette...) with a resolution of 1024X768 minimum.

Software: Adobe Reader, Open Office or MS Word.

Operating system: Linux / Windows / Mac.

Virtual printer: Available only on Windows.